

RENTAL TERMS & CONDITIONS

- 1. Rental Contract** – A rental contract must be completed for every transaction with all pertinent data furnished prior to release of rental equipment.
- 2. Freight** is FOB CLM Equipment yard and return freight to nearest branch.
- 3. Insurance** – Lessee must furnish a certificate of insurance naming CLM Equipment as Loss Payee and Additional Insured for the replacement value of the rental equipment. Loss Damage Waiver is available through CLM Equipment. Lessee must maintain Liability Insurance in addition to Property Damage Insurance.
- 4. Rental Rates** – Rates are based on a period of one day, one week or 4 weeks. Long-term guaranteed rentals may qualify for a reduced rental rate.
- 5. Hour Limits**
Daily – 8 Hours
Weekly – 40 Hours
Monthly – 160 Hours
- 6. Fuel** – Machines are fully fueled when leaving and should be returned with a full tank of fuel in order to avoid additional charges upon return.
- 7. Repairs and Maintenance** – All repairs required due to abuse or negligence will be charged to the lessee upon return of the damaged rental equipment.
- 8. Job/Location** information must be supplied to CLM Equipment.

Rental Purchase Options are available on all new and used equipment. Purchase Option price will be established prior to rental, and a minimum three month commitment is required. This option allows our customers to 'try before you buy' and build equity in the equipment prior to purchase.



Scan QR code above or
visit clmequipment.com



Since 1966, CLM Equipment has been partnering with others to develop our communities. Our state-of-the-art facilities located in New Orleans, Lafayette, Lake Charles and Houston are staffed with industry professionals, ready to serve your needs with a full lineup of reliable brands. Whether your needs include equipment purchase or leasing, rentals, parts or service, we look forward to helping you find the right solution at the right time and the right price.

Contact a CLM account manager or visit clmequipment.com to learn how we can make a difference for you.

NEW ORLEANS
10519 E. Airline Hwy
St. Rose, LA 70087
(504) 433-7999

LAFAYETTE
3135 US Hwy 90 East
Broussard, LA 70518
(337) 837-6693

LAKE CHARLES
4851 E. Napoleon
Sulphur, LA 70663
(337) 625-5942

HOUSTON
2815 N. Sam Houston Pkwy East
Houston, TX 77032
(281) 598-2500

800-CLM-0490
clmequipment.com

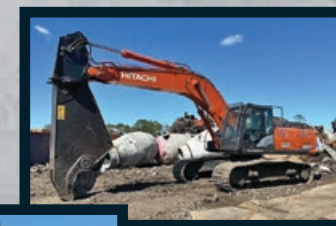
RENTAL EQUIPMENT GUIDE



SPECIALTY PACKAGES

We build custom packages equipped with:

- Shears and Processors
- Hydraulic Hammers / Breakers
- Excavators with Magnet
- Track Loaders with mulcher attachments
- Magnets
- Grapples
- Thumbs
- Material Handlers
- Long Reach Fronts
- High Reach Fronts
- Auto Dismantlers
- Amphibious Excavators (call for availability)



Dozers

Model #	Horsepower	Weight (lb)
650P	104	22,343
700P	135	32,088
750P	175	40,000

HITACHI

Wheel Loaders*

Reliable solutions

Model #	Horsepower	Weight (lb)	Loader Size (cu yd)
ZW50-7	46	9,250	.8 yd ³
ZW80-7	63	12,210	1.2 yd ³
ZW100-7	101	17,042	1.4 yd ³
ZW120-7	101	18,590-	2.0 – 2.4 yd ³
ZW150-7	141	26,960-	3.1 – 3.5 yd ³
ZW180-7	173	32,100-	3.4 – 4.2 yd ³
ZW220-7	193	38,910	4.2 yd ³
ZW310-7	275	53,310	5.5 yd ³
ZW330-7	389	73,800	7.3 – 8.1 yd ³
ZW370-7	389	73,800-	7.8 yd ³

*Carriage Forks and Quick Couplers Available.

Amphibious Excavators

Model #	Reach
AM75 LR	30ft Long Reach
AM130 LR	41ft Long Reach
AM210 LR	50ft Long Reach
AM250 LR	60ft Long Reach
AM300 LR	60ft Long Reach

Excavators*

HITACHI

Reliable solutions



Model #	Horsepower	Weight (lb)	Digging Depth
ZX17 / Vi017	14	3,790	7'2"
ZX26 / Vi025	20	5,560	8'6"
ZX30	23	6,680	9'2"
ZX35 / Vi035	23	7,584	10'
ZX50 / Vi050	36	10,560	11'7"
ZX60 / Vi055	53	13,382	12'4"
ZX75 / Vi080	64	18,600	15'3"
ZX85	64	19,500	14'10"
ZX130 / ZX135	100	30,870	19'9"
ZX160	132	39,463	21'4"
ZX190	132	43,652	23'2"
ZX210	164	49,833	21'11"
ZX245US	164	56,669	21'8"
ZX250	177	60,417	25'
ZX300	249	69,005	25'9"
ZX345US	249	76,955	24'10"
ZX350	271	80,248	26'10"
ZX490	388	110,672	27'2"
ZX690	465	152,780	30'1"
ZX890	510	189,157	31'5"

*Spec based on -7 models

Long Reach Excavators

Model #	Horsepower	Weight (lb)	Maximum Reach
250/260	176	60,400	60'
350	271	80,248	65' & 72'

Track Loaders



Model #	HP	Weight (lb)	Operating Capacity (lb)	Bucket
RT25	25	3,755	665	48"
RT40	38	4,005	931	48"
RT50	53	5,180	1400	60"
RT65 / TL65	67	7,480	1925	67"
VT70 / TL75	74	8,035	2328	67"
RT75 / TL80	74	9,060	2750	72"
VT100 / TL100	103	10,345	3500	78"
RT135	132	12,075	3650	78"

Rollers / Soil Stabilizers



Model #	Horsepower	Weight (lb)	Drum Width	Max Depth
177 SD	74	15,640	66"	
213 SD	160	27,113	84"	
177 PD	74	16,515	66"	
213 PD	160	29,375	84"	
RS460	483	46,187	110"	20"

Brooms



Model #	Horsepower	Broom Size	Water System
DT80K	74	96"	41 gal.

Forklifts



Model #	Lift Capacity (lb)	Forks
MI30G	3,000	4'
M30-4	6,000	5'
M40-4	8,000	4'

Extended Reach Forklifts



Model #	Lift Capacity (lb)	Max Lift Height	Weight (lb)
944X	9,000	44'6"	22,500
1246X	12,000	46'6"	29,670

Material Handlers



Model #	Weight (lb)	Max Reach	Generator
270MH	67000	48'2"	15kw
350MH	79600	54'2"	20kw
400MH	97500	57'5"	20kw

Metal Shear Packages (Rotating)



Model #	Shear Weight
2ND MEMBER ROTATING SHEAR PACKAGES	
20 TON EXCAVATOR WITH GXT335 / FS35	8,000
25 TON EXCAVATOR WITH GXT445 / FS45	11,000
35 TON EXCAVATOR WITH GXT665 / FS75	15,500
50 TON EXCAVATOR WITH GXT995 / FS95	21,000
3RD MEMBER ROTATING SHEAR PACKAGES	
20 TON EXCAVATOR WITH GXT225 / FS25	5,000
35 TON EXCAVATOR WITH GXT335 / FS35	8,000
50 TON EXCAVATOR WITH GXT445 / FS45	11,000
3RD MEMBER CONCRETE TOOLS	
EXCAVATORS WITH CONCRETE CRACKERS / PULVERISERS	

Hydraulic Hammers

Model #	Energy Class (lb)
Mini Excavators/Skid Steers	500
ZX75/85	1,500
ZX130	2,500
ZX210	4,500
ZX250	5,500
ZX300 / ZX350	7,500
ZX490	10,000